

SEE 1961 CUY-90-13.33  
PLANS FOR STORM SEWER  
AND DRAINAGE STRUCTURE  
UPGRADES.

SEE 1946 CUY-2-21.98  
PLANS FOR ORIGINAL  
CONSTRUCTION

SEE THE 1975 CUY-90-21.27  
FOR SEWER AND DRAINAGE  
STRUCTURE UPGRADE.

SEE THE 1975 CUY-90-21.27  
PLANS FOR THE MEDIAN  
CONCRETE BARRIER INSTALL

STORM SEWERS									
Item No	Station	Side	Lin Ft. Pipe	Spec	Sta. 1-2-A	Location	WEST APPROACH	FREEMAN	STATION
	From To	Rt. or Lt.	12" 12" Under Pavt.	C.I. #1	C.B. With Salv. Casting	Structure			
1-E	0+475 0+450	Lt.	22	1	1	0-475			
2-E	0+450 0+400	Lt.	6	1	1	0-450:0-450			
TOTALS			22	6	1				
3-E	0+00 0+00	Lt.				0+00			
4-E	0+00 0+00	Rt.	51	1	1	0+00			
5-E	2+25 2+25	Rt.	51	1	1	2+25			
6-E	4+50 4+50	Rt.	51	1	1	4+50:4+50			
7-E	6+75 6+75	Rt.	51	1	1	6+75			
TOTALS			12	204	4				

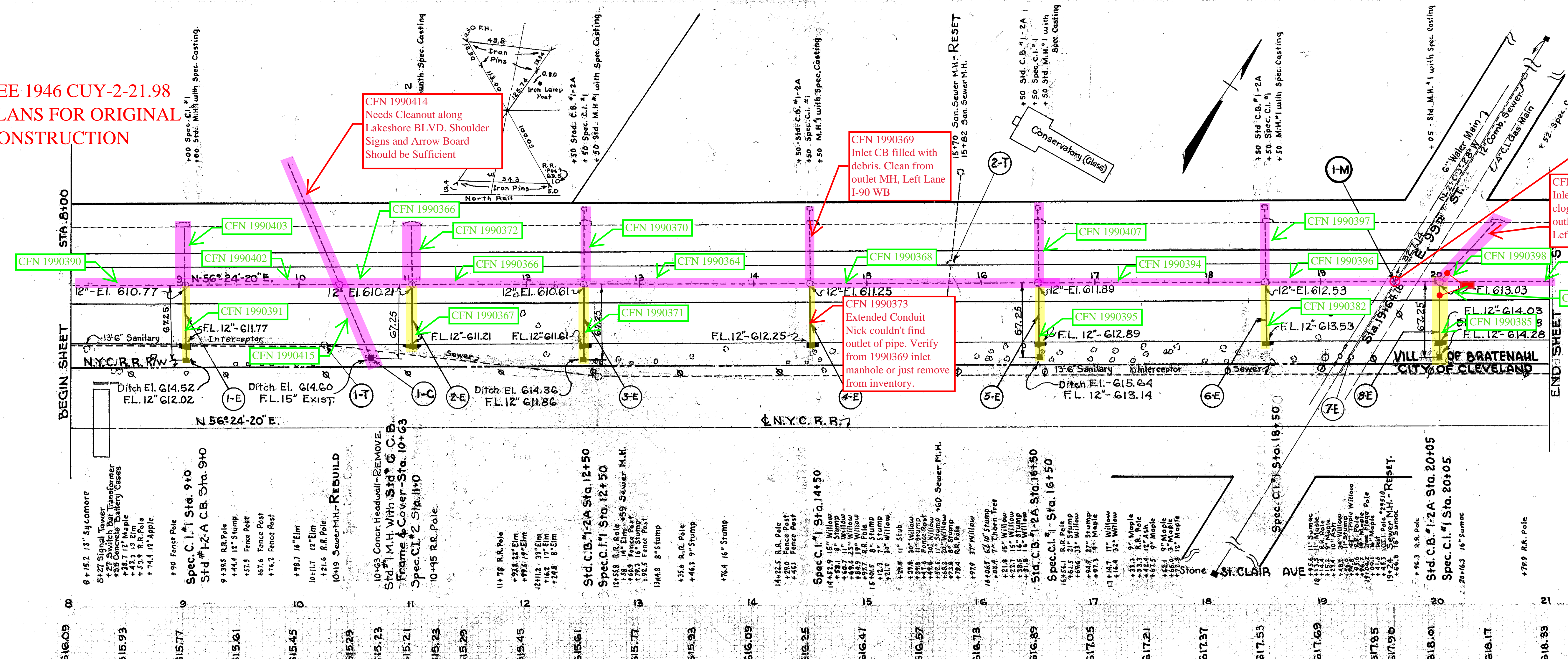
SANITARY SEWERS									
Item No	Station	Side	Rebuild	Location	WEST APPROACH	FREEMAN	STATION	WEST APPROACH	FREEMAN
		Rt. or Lt.	M.H.	Structure					
1-T	0-205	Rt.	1	0-205					
2-T	0-171	Rt.	1	0-171					
TOTALS			2						
3-T	1+18	Rt.	1	1+18					
4-T	4+24	Rt.	1	4+24					
5-T	7+26	Rt.	1	7+26					
TOTALS			3						

Excavation	3437	Cu.Yds.
Embankment	173	Cu.Yds.
Embankment +22%	211	Cu.Yds.



- SEE 1946 CUY-2-21.98  
PLANS FOR ORIGINAL  
CONSTRUCTION

SLM 21.63 = MM 177.44



MONUMENT BOXES RESET

ITEM NO	STATION	EACH
I M	19+64.78	1
TOTAL		1

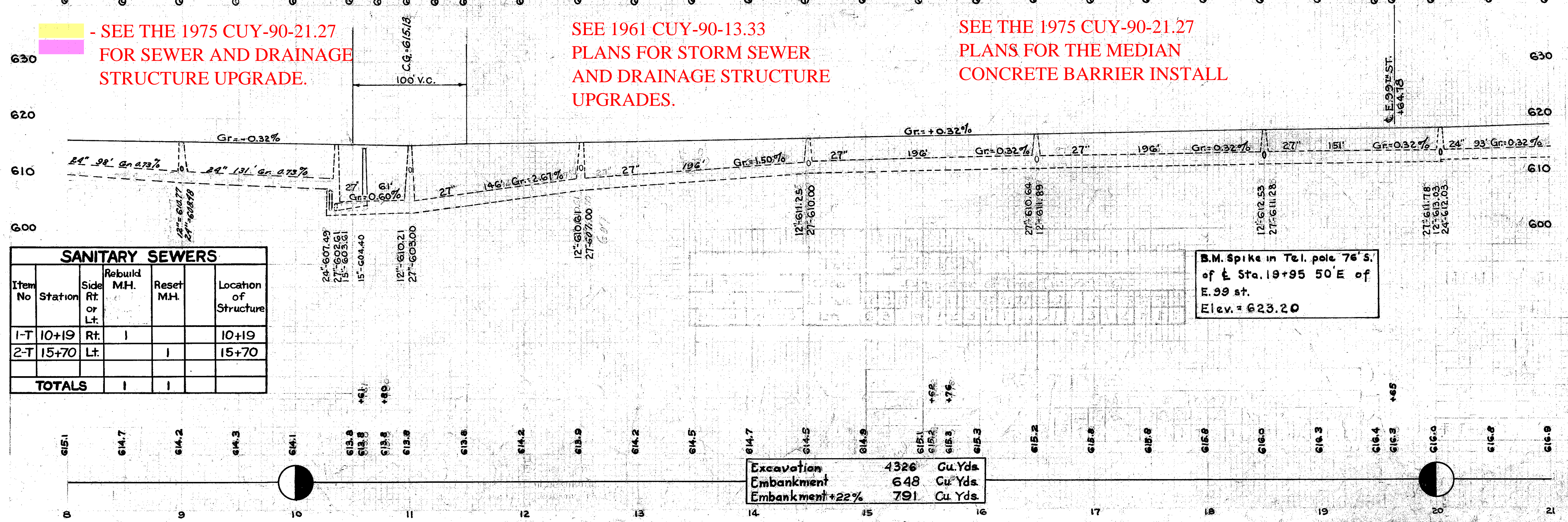
STRUCTURES 20' AND UNDER

Item No	Station	Side Rt. or Lt.	Remove Headwall Item S22	Std. M.H.*1 With Std.*6 Catch Basin Frame and Cover	Location of Structure
I-C	10+63	Rt	Lump Sum	1	10+63:10+63
TOTALS			Lump Sum	1	

- SEE THE 1975 CUY-90-21.27  
FOR SEWER AND DRAINAGE  
STRUCTURE UPGRADE.

SEE 1961 CUY-90-13.33  
PLANS FOR STORM SEWER  
AND DRAINAGE STRUCTURE  
UPGRADES.

SEE THE 1975 CUY-90-21.27  
PLANS FOR THE MEDIAN  
CONCRETE BARRIER INSTALL



SANITARY SEWERS

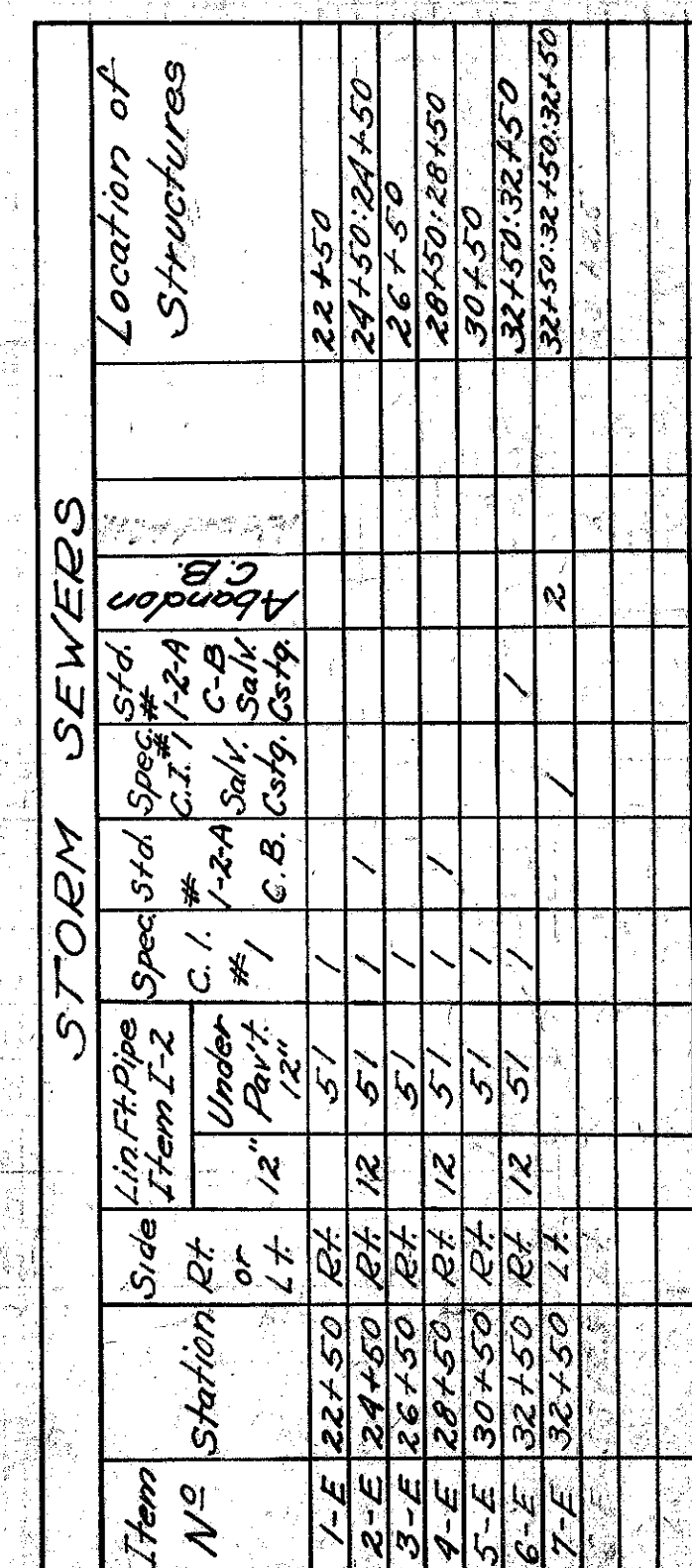
Item No	Station	Side Rt. or Lt.	Rebuild M.H.	Reset M.H.	Location of Structure
1-T	10+19	Rt.	1		10+19
2-T	15+70	Lt.		1	15+70
TOTALS			1	1	

Excavation	4326	Cu. Yds.
Embankment	648	Cu. Yds.
Embankment +22%	791	Cu. Yds.

STORM SEWERS

Item No	Station	Side Rt. or Lt.	Rebuild M.H.	Reset M.H.	Location of Structure
1-E	9+00	Rt	1		
2-E	11+00	Rt	1		
3-E	12+50	Rt	1		
4-E	14+50	Rt	1		
5-E	16+50	Rt	1		
6-E	18+50	Rt	1		
7-E	19+24	Rt	1		
8-E	20+05	Rt	1		

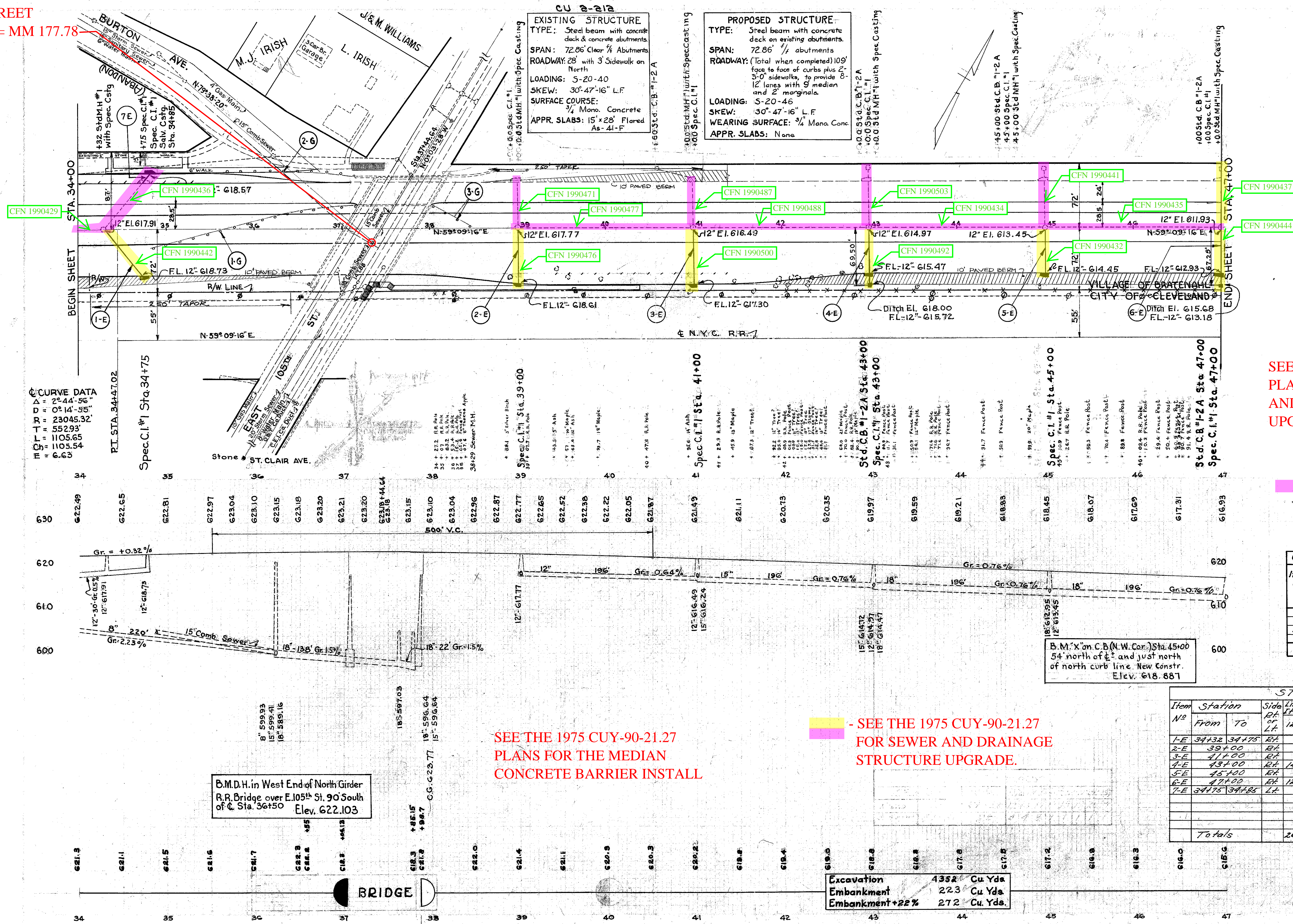




SANITARY SEWER				
Item No.	Station	Side Rt. or Lt.	Reset M.H.	Location of Structure
I-T	33+25	Lt.	1	33+25
Totals			1	



E. 105th STREET  
SLM 21.97 = MM 177.78



SEE 1961 CUY-90-13.33  
PLANS FOR STORM SEWER  
AND DRAINAGE STRUCTURE  
UPGRADES.

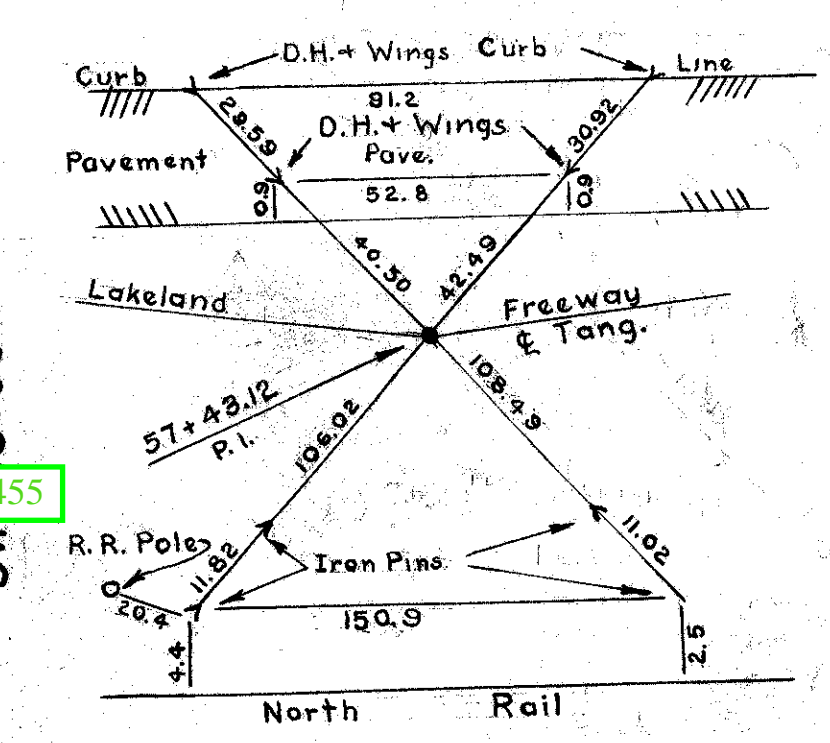
- SEE 1946 CUY-2-21.98  
PLANS FOR ORIGINAL  
CONSTRUCTION

GUARD RAIL REMOVED AND STORED			
Item No.	Station		Item 1-15 Guard Rail Removed & Stored Lin. Ft.
	From	To	
1-G	34+83	37+22	240
2-G	35+72	36+69	97
3-G	38+02	38+44	48
Total			385

STORM SEWERS									
Item No.	Station	Side	Lin. Ft.	Pipe	Spec.	Std.	Spec.	Location of Structure	
	From To	Rt. or Lt.	Under	12" Under	C.I. #1	7-2A	Salv. C.B. Cast.		
1-E	34+32 34+75	RT	67	1				34+75	
2-E	39+00 39+40	RT	62	1				39+00	
3-E	41+00 41+40	RT	63	1				41+00	
4-E	43+00 43+40	RT	52	1				43+00	
5-E	45+00 45+40	RT	51	1				45+00	
6-E	47+00 47+40	RT	51	1				47+00	
7-E	34+75 34+85	LT	14					34+75	
Totals			26	360	6	2	1		

Excavation 4352 Cu Yds  
Embankment 223 Cu Yds  
Embankment +22% 272 Cu Yds





MONUMENT BOXES RESET		
ITEM NO	STATION	EACH
1 M	PI 57+43.12	1
TOTALS		1

SANITARY SEWERS				
Item No.	Station	Side Rt. or Lt.	Reset Exist. M.H.	Location of Structure
1-T	54+70	Rt.	1	54+70
TOTALS		1		

SEE 1961 CUY-90-13.33  
PLANS FOR STORM SEWER  
AND DRAINAGE STRUCTURE  
UPGRADES.

- SEE 1946  
CUY-2-21.98  
PLANS FOR

STORM SEWERS		Location of Structures	
Item No.	Station	Structure	Location
1-E	49+00	24" R.R. Pole	49+00
2-E	51+00	24" R.R. Pole	51+00
3-E	53+00	24" R.R. Pole	53+00
4-E	55+00	24" R.R. Pole	55+00
5-E	57+00	24" R.R. Pole	57+00
6-E	59+00	24" R.R. Pole	59+00

- SEE THE 1975 CUY-90-21.27  
FOR SEWER AND DRAINAGE  
STRUCTURE UPGRADE.

SEE THE 1975 CUY-90-21.27  
PLANS FOR THE MEDIAN  
CONCRETE BARRIER INSTALL

Excavation	4261	Cu.Yds.
Embankment	98	Cu.Yds.
Embankment + 22%	120	Cu.Yds.



- SEE 1946 CUY-2-21.98  
PLANS FOR ORIGINAL  
CONSTRUCTION

SANITARY SEWERS					
Item No	Station	Side Rt. or L.	Rebuild Exist. M.H.	Reset Exist. M.H.	Location of Structure
1-T	61+32	Rt.	I		61+32
2-T	64+57	Rt.		I	64+57
TOTALS			I	I	

SEE 1961 CUY-90-13.33  
PLANS FOR STORM SEWER  
AND DRAINAGE STRUCTURE  
UPGRADES.

STORM SEWERS				Location of Structure	
Item No	Station	Side	Structure	Location of Structure	Location of Structure
1-E	60+40	Rt.	12" 12' 12"	60+40	60+40
2-E	62+00	Rt.	12" 12' 12"	62+00	62+00
3-E	63+70	Rt.	12" 12' 12"	63+70	63+70
4-E	66+00	Rt.	12" 12' 12"	66+00	66+00
5-E	68+00	Rt.	12" 12' 12"	68+00	68+00
6-E	70+00	Rt.	12" 12' 12"	70+00	70+00
7-E	72+25	Rt.	12" 12' 12"	72+25	72+25

SFN 1808524  
SLM 22.45.  
Original plans from  
1927. See bridge folder.

SEE THE 1975 CUY-90-21.27  
PLANS FOR THE MEDIAN  
CONCRETE BARRIER INSTALL

- SEE THE 1975 CUY-90-21.27  
FOR SEWER AND DRAINAGE  
STRUCTURE UPGRADE.

RAMP EMBANKMENT

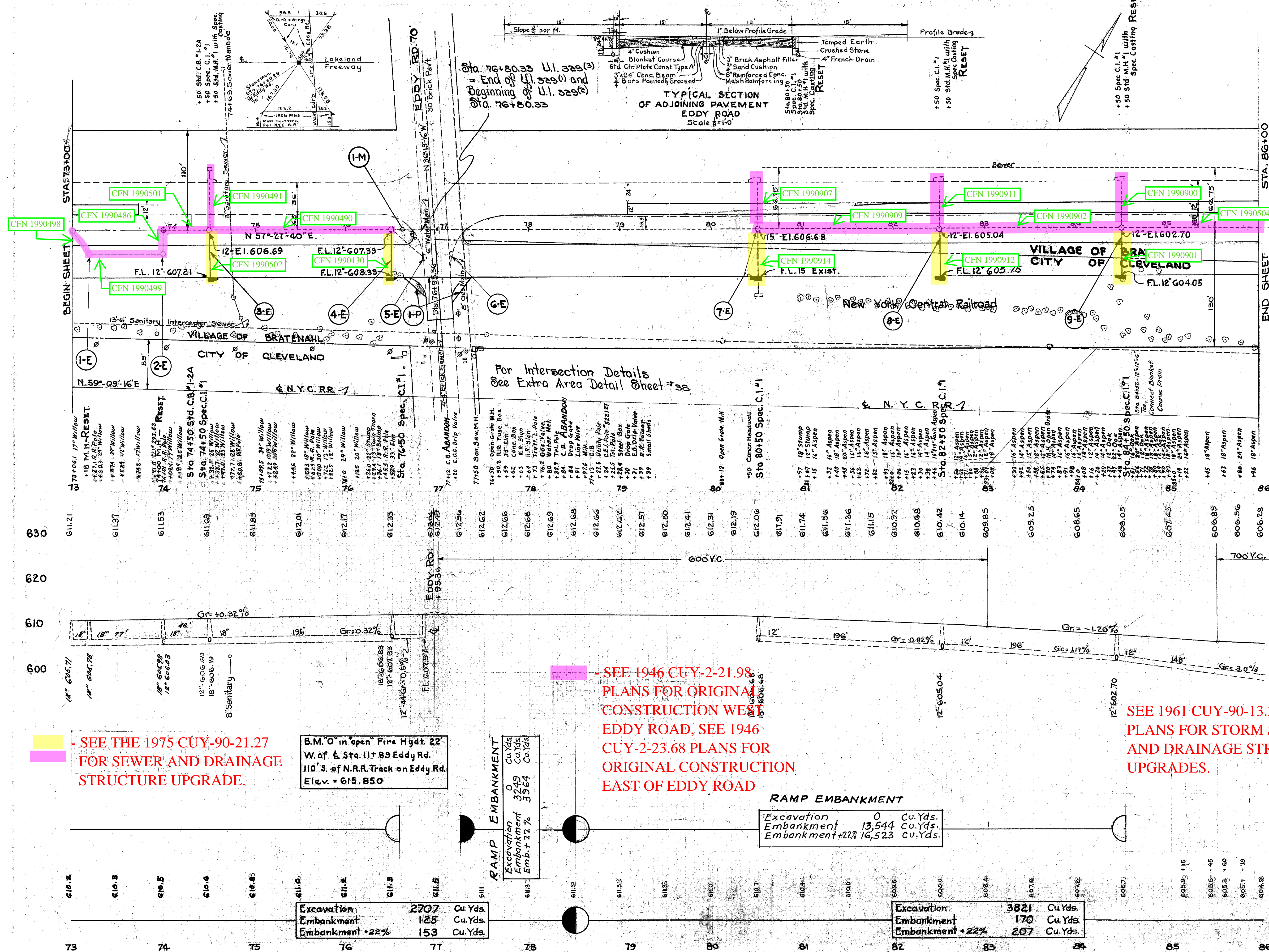
Excavation	0	Cu.Yds
Embankment	24,129	Cu.Yds
Embankment+22%	29,437	Cu.Yds

Excavation	3129	Cu.Yds
Embankment	132	Cu.Yds
Embankment+22%	161	Cu.Yds



DIVISION	STATE	PROJECT	FUNDS
2	OHIO	UI-329 (3)	POSTWAR

CUYAHOGA COUNTY  
CUY. 2-20.46



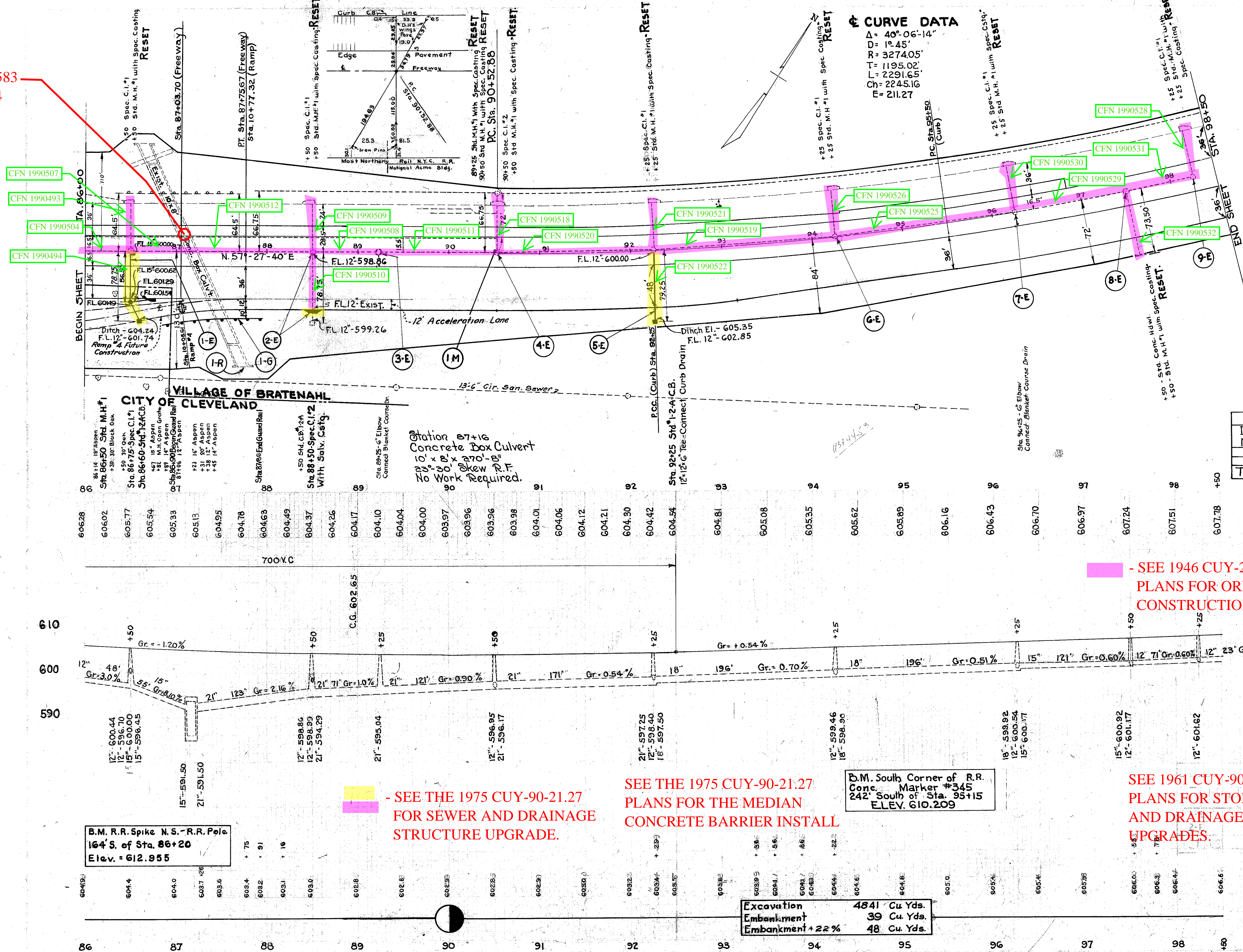
MONUMENT BOXES RESET		
ITEM NO	STATION	EACH
1 M	76+60.29	1
<b>TOTAL</b>		<b>1</b>

PIPE UNDERDRAIN (CURB)					
Item	Station		6" Pipe	Pipe Specials	
No	From	To	Lin. Ft.	6x6x6 Y	6" Elbows
I-P	76+60.26	77+40.43	146	2	2
TOTALS			146	2	2

STORM SEWERS									
Item No	Station	Side of Road	Size of Pipe	Depth	Location of Structure	Excavation	Embankment	Embankment +22%	Total
1-E	73+18	Left	18"	1.0	73+18				
2-E	74+00	Left	18"	1.0	74+00				
3-E	74+50	Left	18"	1.0	74+50				
4-E	76+50	Left	18"	1.0	76+50				
5-E	76+84	Left	18"	1.0	76+84				
6-E	77+12	Left	18"	1.0	77+12				
<b>TOTALS</b>									
7-E	80+50	Right	18"	1.0	80+50				
8-E	82+50	Right	18"	1.0	82+50				
9-E	84+50	Right	18"	1.0	84+50				
<b>TOTALS</b>									



SFN 1808583  
SLM 22.94



**CURVE DATA**  
Δ = 40° 06' 14"  
D = 1° 45'  
R = 3274.05'  
T = 1195.02'  
L = 2291.65'  
Ch = 2245.16'  
E = 211.27'

MONUMENT BOXES RESET		
ITEM NO	STATION	EACH
1-M	90+52.88	1
TOTAL		1

GUARD RAIL				
Item No	Station	Side	Rt-Lt	Lin. Ft.
1-G	86+90	87+86	Rt.	96
TOTALS				96

RIPRAP				
Item No	Station	Side	Riprap Sq. Yds.	Remarks
1-R	87+16	Rt.	25	Place as Directed
TOTAL			25	

- SEE 1946 CUY-2-23.68  
PLANS FOR ORIGINAL  
CONSTRUCTION.

- SEE THE 1975 CUY-90-21.27  
FOR SEWER AND DRAINAGE  
STRUCTURE UPGRADE.

SEE THE 1975 CUY-90-21.27  
PLANS FOR THE MEDIAN  
CONCRETE BARRIER INSTALL

SEE 1961 CUY-90-13.33  
PLANS FOR STORM SEWER  
AND DRAINAGE STRUCTURE  
UPGRADES.

Excavation 4841 Cu. Yds.  
Embankment 39 Cu. Yds.  
Embankment + 22% 48 Cu. Yds.

STORM SEWER		Location of Structure		Spec. Requirements		Structure		Remarks	
Item No	Station	From	To	Side	Structure	Structure	Structure	Structure	Structure
1-E	86+00	86+00	86+00	Rt.	12' x 12' concrete box culvert	12' x 12' concrete box culvert	12' x 12' concrete box culvert	12' x 12' concrete box culvert	12' x 12' concrete box culvert
2-E	87+00	87+00	87+00	Rt.	12' x 12' concrete box culvert	12' x 12' concrete box culvert	12' x 12' concrete box culvert	12' x 12' concrete box culvert	12' x 12' concrete box culvert
3-E	88+00	88+00	88+00	Rt.	12' x 12' concrete box culvert	12' x 12' concrete box culvert	12' x 12' concrete box culvert	12' x 12' concrete box culvert	12' x 12' concrete box culvert
4-E	89+00	89+00	89+00	Rt.	12' x 12' concrete box culvert	12' x 12' concrete box culvert	12' x 12' concrete box culvert	12' x 12' concrete box culvert	12' x 12' concrete box culvert
5-E	90+00	90+00	90+00	Rt.	12' x 12' concrete box culvert	12' x 12' concrete box culvert	12' x 12' concrete box culvert	12' x 12' concrete box culvert	12' x 12' concrete box culvert
6-E	91+00	91+00	91+00	Rt.	12' x 12' concrete box culvert	12' x 12' concrete box culvert	12' x 12' concrete box culvert	12' x 12' concrete box culvert	12' x 12' concrete box culvert
7-E	92+00	92+00	92+00	Rt.	12' x 12' concrete box culvert	12' x 12' concrete box culvert	12' x 12' concrete box culvert	12' x 12' concrete box culvert	12' x 12' concrete box culvert
8-E	93+00	93+00	93+00	Rt.	12' x 12' concrete box culvert	12' x 12' concrete box culvert	12' x 12' concrete box culvert	12' x 12' concrete box culvert	12' x 12' concrete box culvert
9-E	94+00	94+00	94+00	Rt.	12' x 12' concrete box culvert	12' x 12' concrete box culvert	12' x 12' concrete box culvert	12' x 12' concrete box culvert	12' x 12' concrete box culvert



- SEE 1946 CUY-2-23.68  
PLANS FOR ORIGINAL  
CONSTRUCTION.

SANITARY SEWER				
Item No.	Station	Side Rt. or L.	Reser. Exist. No. 4.	Location of Structure
I-T	0+18.05 Coit Rd.	E	1	0+18.05 Coit Rd.
TOTALS			1	

GUARD RAIL			
Item No.	Station		Guard Rail Item I-15 Lin. Ft.
	From	To	
I-G	104+02	108+50	448
TOTALS			448

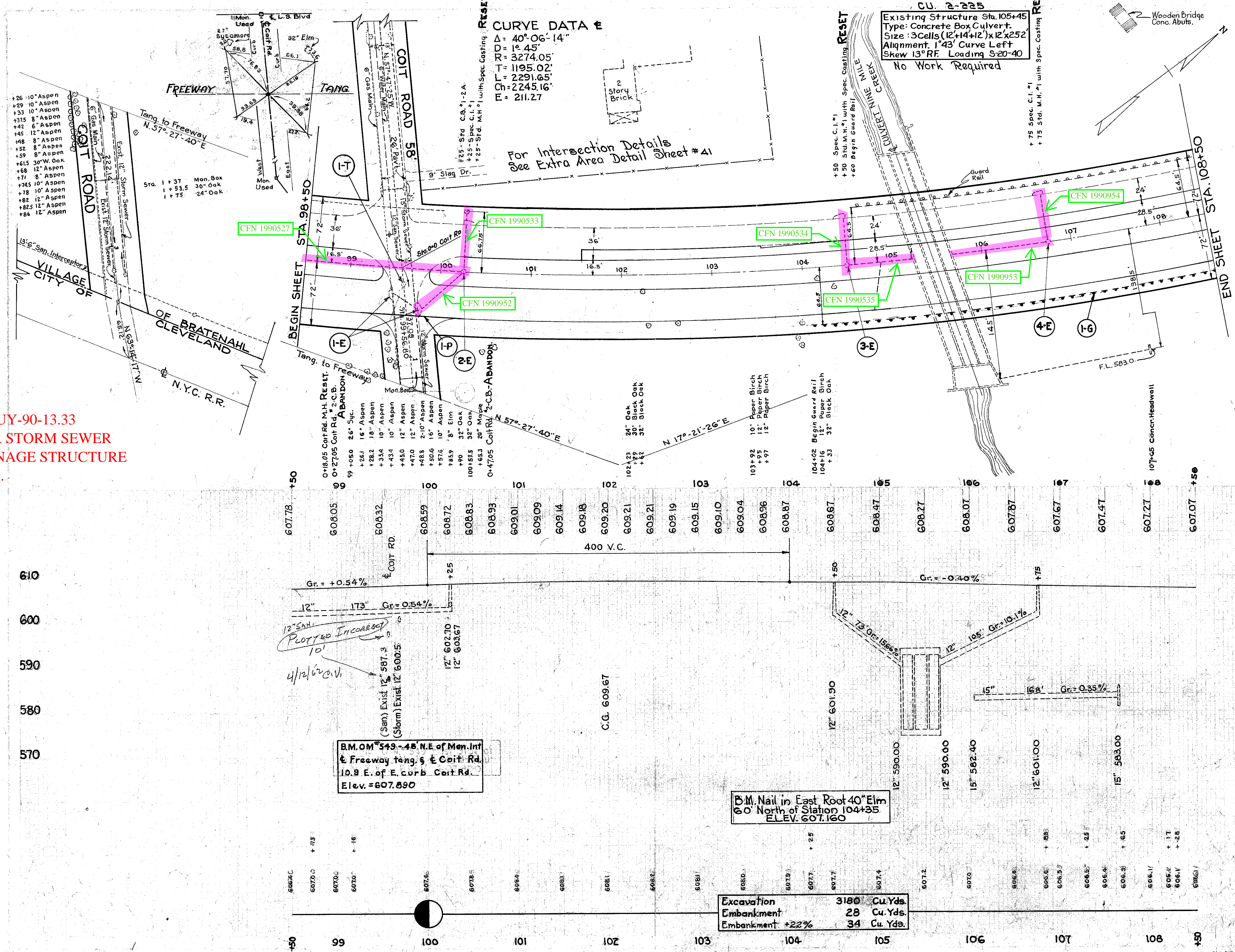
PIPE UNDERDRAIN (CURB)			
Item No.	Station		6" Pipe Lin. Ft.
	From	To	
I-P	99+20.46	100+25.07	106
TOTALS			106

SEE THE 1975 CUY-90-21.27  
PLANS FOR THE MEDIAN  
CONCRETE BARRIER INSTALL

- SEE THE 1975 CUY-90-21.27  
FOR SEWER AND DRAINAGE  
STRUCTURE UPGRADE.

STORM SEWER					
Item No.	STATION		side Rt. or L.	Abandon C. B.	Reser. Exist. M.H.
	From	To			
I-E	0+18.05	0+18.05	Rt.	2	
2-E	100+25	100+25	E	1	
3-E	104+50	104+50	E	1	
4-E	106+15	106+15	E	1	
TOTALS				2	3

SEE 1961 CUY-90-13.33  
PLANS FOR STORM SEWER  
AND DRAINAGE STRUCTURE  
UPGRADES.





CFN 1990982  
Cleaned Out -  
Needs Remote

MONUMENT BOXES RESET		
ITEM NO.	STATION	EACH
1 M	113+44.53	1
2 M	117+04.19	1
TOTALS		2

GUARD RAIL			
Item No	Station	Side Rt. Lt.	Lin Ft.
1 - G	108+50	110+10	160
TOTALS			160

STORM SEWERS						
Item No.	STATION	Side Rt. or Lt.	Spec. C.I. #1	Reset Exist. C.B.	Reset Exist. M.H.	Location of Structure
1-E	109+00			1		109+00
2-E	111+25				1	111+25
3-E	113+50				1	113+50
4-E	115+50				1	115+50
5-E	117+70		1		1	117+70 : 117+70
6-E	119+90		1		1	119+90 : 119+90
		2	1	5		

SANITARY SEWERS				
Item No	Station	Side Rt. or Lt.	Reset Exist. M.H.	Location of Structure
1-T	119+09	Lt.	1	119+09
TOTALS			1	

PIPE UNDERDRAIN (CURB)				
Item No	Station	Side	6" Outlet Lin. Ft.	Pipe Spec. 6" Elbow
1-P	109+00	Rt.	38	1
2-P	115+50	Rt.	38	1
TOTALS			76	2

SEE THE 1975 CUY-90-21.27  
PLANS FOR THE MEDIAN  
CONCRETE BARRIER INSTALL

Δ = 52° 24' 03"  
D = 1° 45'  
R = 3274.05'  
T = 1011.12'  
L = 2994.43'  
Ch = 2891.15'  
E = 374.94'

Sta. 120+06 12" Twin Elms  
+34 12" Elm  
+43 30" Elm  
+62 15" Elm  
Sta. 121+26 36" Elm

Sta. 117+70 - Spec. C.I. #1  
+70 Std. 12" A.C.B.

Sta. 118+59 34" Elm  
+64 24" Elm  
+80 24" Elm  
Sta. 119+05 32 Slippery Elm  
+24 24" Slippery Elm

P.C. Sta. 117+04.19  
12" Maple

Sta. 114+35 4" Poplar  
+51 15" Poplar  
+60 15" Poplar  
+72 15" Poplar  
+74 15" Poplar  
+81 18" Poplar  
+87 12" Poplar  
+90 15" Poplar  
+96 15" Poplar  
Sta. 115+00 12" Poplar  
+07 18" Poplar  
+13 15" Poplar  
+14 10" Poplar  
+15 4" Poplar  
+21 15" Poplar  
+22 18" Poplar  
+33 2" Poplar  
+34 3" Poplar  
+36 4" Poplar  
+37 3" Poplar  
+39 6" Poplar  
+40 8" Poplar  
+46 10" Poplar  
+54 15" Poplar  
+55 5" Poplar  
+61 15" Poplar  
+71 4" Poplar  
+74 15" Poplar  
+76 6" Poplar  
+84 12" Poplar  
+91 12" Poplar  
+98 8" Maple

Excavation 4092 Cu. Yds.  
Embankment 52 Cu. Yds.  
Embankment +22% 63 Cu. Yds.

CURVE DATA Δ  
Δ = 40° 06' 14"  
D = 1° 45'  
R = 3274.05'  
T = 1195.02'  
L = 2291.65'  
Ch = 2245.16'  
E = 211.27

RESET  
NAIL-ROOT 30" ELN  
IRON PINS  
NAIL-ROOT 20" CHERRY  
LAKELAND  
FREEWAY  
IRON PIPE  
IRON PINS  
PT. Sta. 113+44.53  
+50-Std. M.H. #1 with Spec. Coating  
+50-Std. C.I. #1  
+50-Std. C.B. #1-2A

CFN 1990963  
CFN 1990972  
CFN 1990960  
CFN 1990961  
CFN 1990956  
CFN 1990958  
CFN 1990955  
CFN 1990957  
CFN 1990970  
CFN 1990962  
CFN 1990964  
CFN 1990965  
CFN 1990966  
CFN 1990967  
CFN 1990982

Sta. 109+00 -6" Elbow  
Connect Blanket Course Dr.

Sta. 110+10 End Guard Rail  
Sta. 110+23 26 Oak

+37 24" Oak  
+93 24" Oak

SEE 1961 CUY-90-13.33  
PLANS FOR STORM SEWER  
AND DRAINAGE STRUCTURE  
UPGRADES.

SEE 1946 CUY-2-23.68  
PLANS FOR ORIGINAL  
CONSTRUCTION.

SEE THE 1975 CUY-90-21.27  
FOR SEWER AND DRAINAGE  
STRUCTURE UPGRADE.

B.M. Nail in East Root of  
40" Elm 160' North of Sta.  
112+40 ELEV. 607.062

B.M. Nail in South Root 26" Elm  
135' North of Station 120+65  
ELEV. 603.776